

JV01C  
Fence  
**Colores**

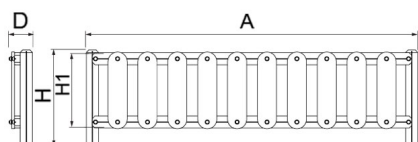


Treated pine  
wood



**OBI Fence, consisting of posts (Ø x H) 80x1250 mm made of Rebnew plastic (BENITO's recycled polymer, produced entirely from yellow container packaging and requiring no maintenance) and two crossbars made of 20 mm ropes at two heights. Anchored to a prepared concrete surface, depending on the surface and project.**

**Laminated pine wood class GL24**, treated in autoclave with risk factor IV using TANALITH E preservative, free from heavy metal traces. According to the European standard EN351/EN335 on risk factors, class IV applies to wooden posts in direct contact with the ground. Under climatic conditions, the treated wood develops a warm honey-brown colour that naturally weathers into a silver-grey shade. When exposed to variable weather conditions, laminated pine wood may show small surface cracks that do not reduce its durability. Resin and knots are part of its natural appearance.



Ref.	A	H	H1	D
JV01C/T	2000	750	590	184

**Coloured Door**  
JV01C-PT



